

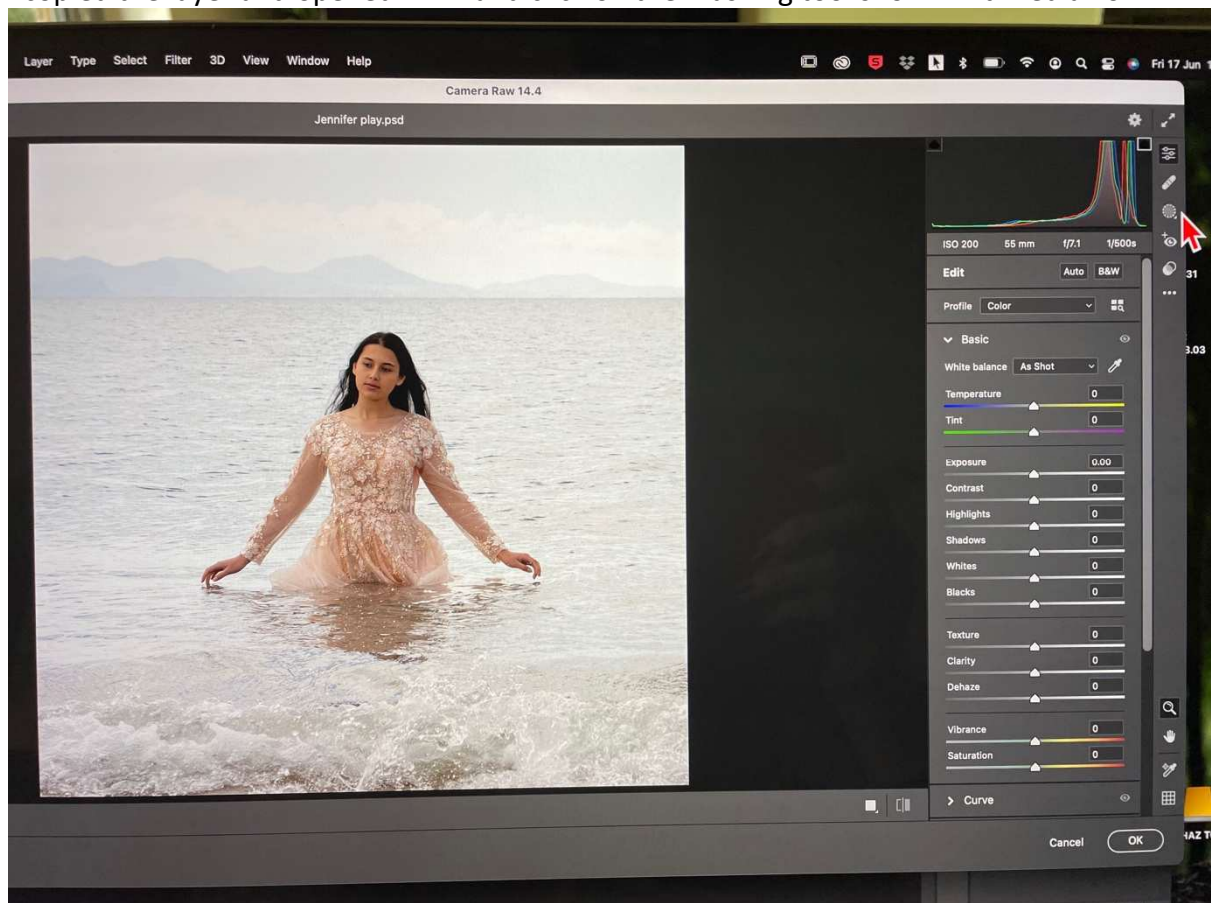
## How I use RAW to add light to faces:

I found an original image and took photos with my camera to explain LOL.

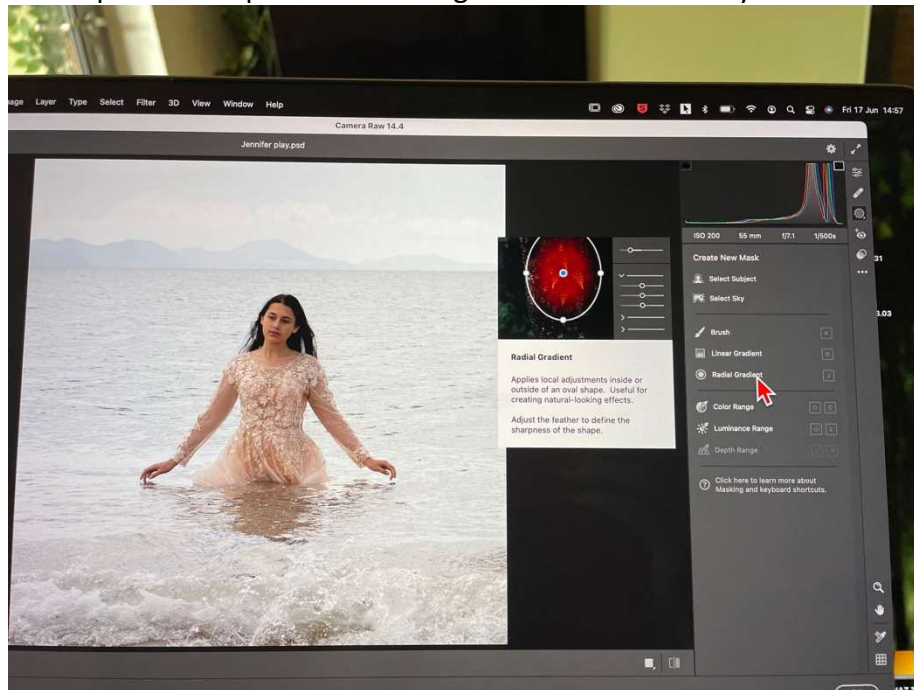
First image is straight from camera, her face needed more light



I copied the layer and opened RAW and click on the masking tool shown with red arrow



A new panel will open. Select the gradient tool shown by red arrow



You can now draw a circle/oblong. Don't worry about the size, shape or direction as you can alter this. This is the first drawn shape.



This is the gradient made smaller and the direction changed



Now move the exposure slider up. The red mask will disappear so you can see what you are doing. I usually over expose a little as it's on it's own layer you can then lower the opacity of the layer until you are happy.



Hope you can understand all this.  
Best wishes Sharon x