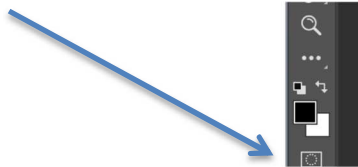
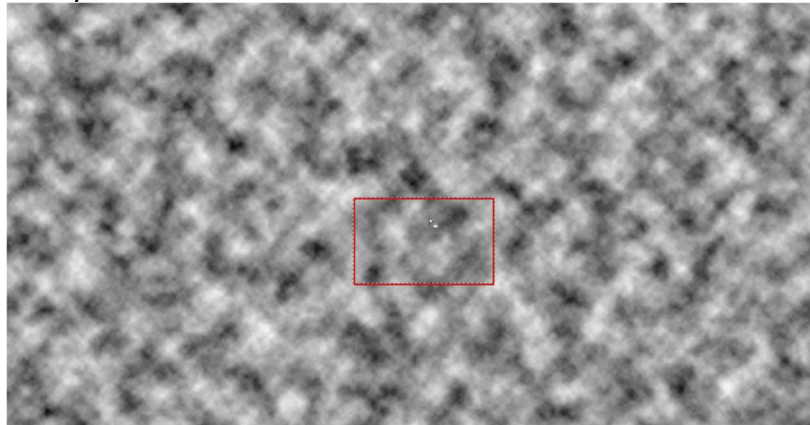


HOW TO ADD MIST Using Render Cloud

- Open your image
- Make a new blank layer. Go to layer, down to new and across to layer
- Make sure your brush colours are black in the foreground and white in the background:



- Go to Render and down to Cloud. It will open as a horrid fuzzy layer
- Go to the rectangular marquee tool and draw a small rectangle anywhere on of the cloud layer:



- Press COMMAND and J on a Mac (CONTROL and J on a PC) and this small area will appear as new layer. Now delete your fuzzy cloud large layer or you can keep making different layers of mist (each one will be different) and keep this as a MIST TEMPLATE for future use.
- Command T on a MAC (Control on a PC) to open the TRANSFORM BOX and drag the corners out to enlarge and cover your image with mist
- You can leave all over your image or move around to just cover an area
- Lower the opacity to around 30% or play with the blending modes – each image will be different
- Add a Layer mask and paint with a soft black brush over any area you don't want mist showing so that the mist is removed.