

Portraiture

a brief introduction

Geoff Shaw & Helen Warnod

Module 2: Lighting for Portraiture



Module 1 Homework



Module 1 Homework

Amazing work.

Full comments available in a google gallery.

<https://photos.app.goo.gl/Aaf97PBpSs53hU1x9>

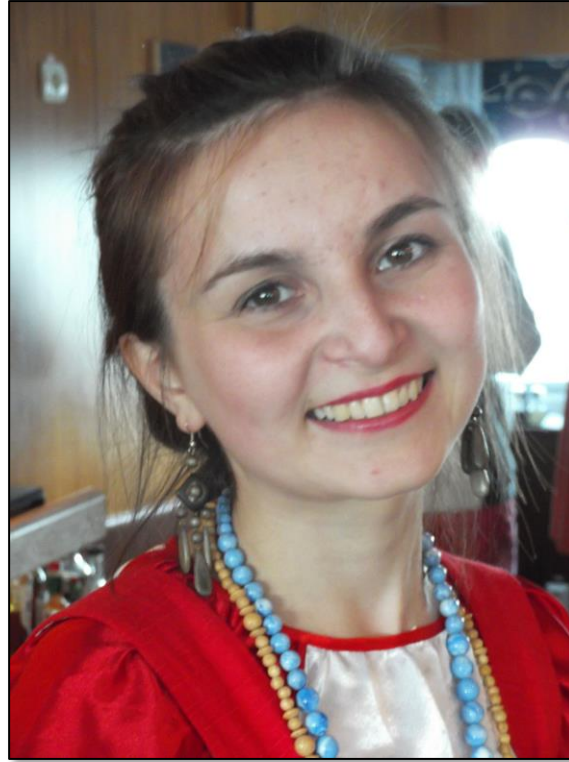
There were too many images to discuss every image in detail in this Zoom. I have selected a few to discuss based on educational value.



Viewpoint – normal / high / low



Geoff Brown



Rod Turner



Elaine Whitton

Colour / Monochrome



Colleen Singleton

Looking at camera or not



Marlene Chaitra



Elaine Whitton

Environmental or isolated



Kerry McFarlane



Ken Barnett

Single or multiple people



Johnny Kuo



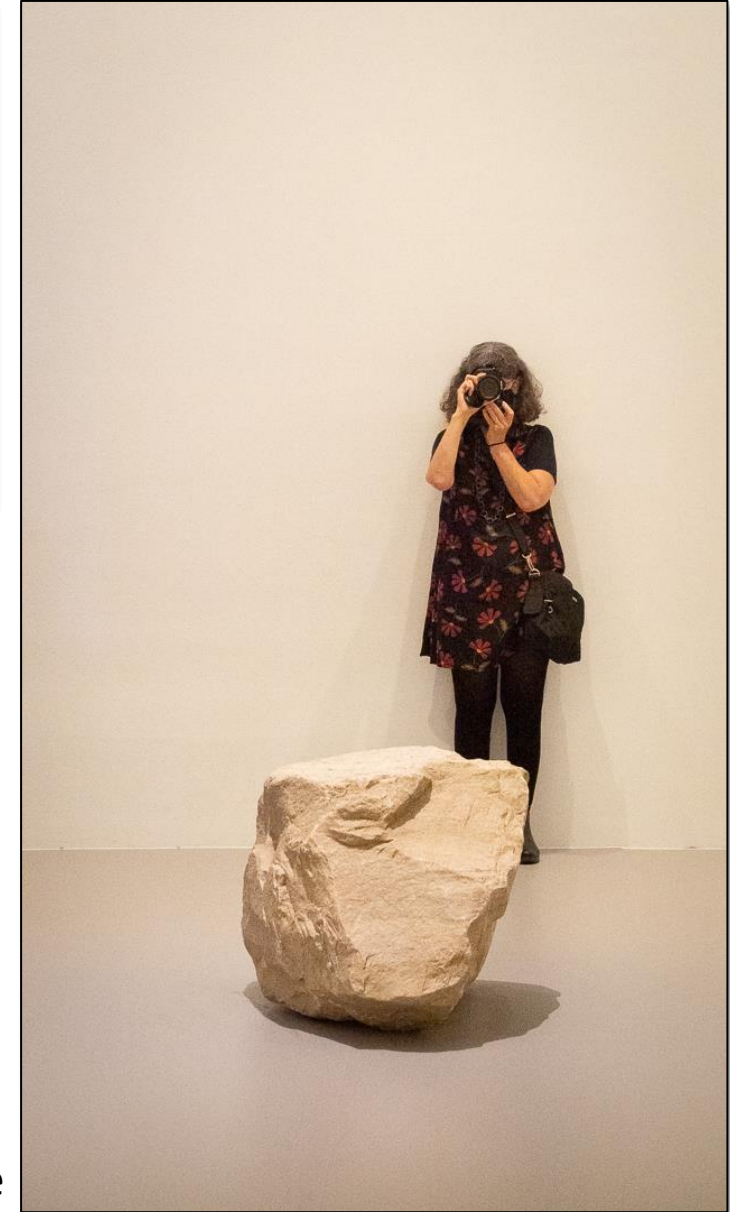
Tim Keane

Creative



Jill Shaw

Sim Chong



Leanne Poole

Creative



*Taken in National
Gallery of Australia:*

Yayoi Kusama

Infinity Room

Geoff Shaw

Animal Portraits



*Brushtailed Rock
wallaby*

Tidbinbilla, ACT

Geoff Shaw

Narrative/ documentary



Rosie Hughes

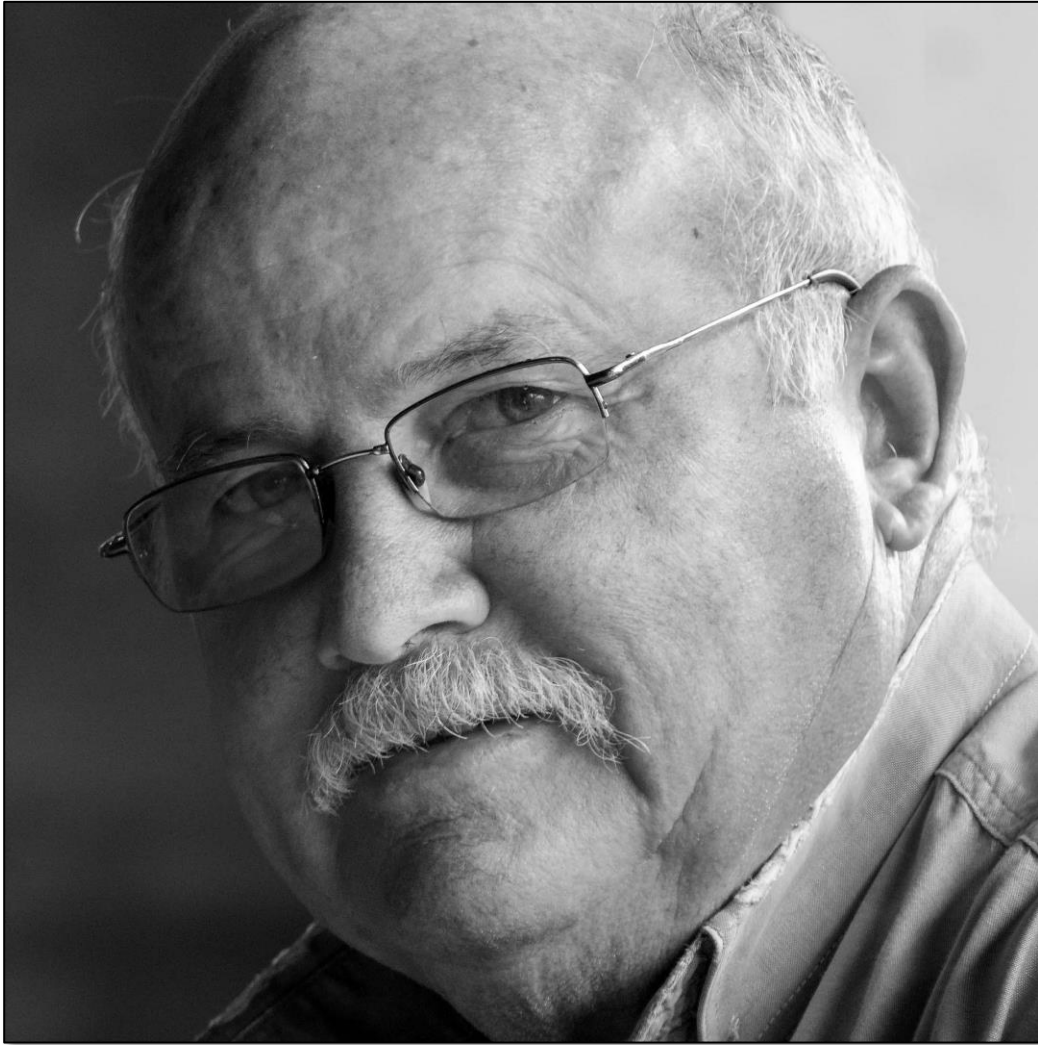


Kerry McFarlane



Leanne Poole

Emotional / empathy



Sim Chong

Vira Vujovich



Dramatic lighting



Stephen Hilton

[GS converted to B&W]

Module 2

Light for Portraiture



Hello 2021

The coronavirus pandemic and the climate crisis loom large,
but there is also hope on the horizon



Physician Alister Martin was given one of the US's first doses of the Pfizer and BioNTech vaccine at Massachusetts General Hospital in Boston on 16 December 2020. This year, millions more people are expected to receive one of a range of vaccines

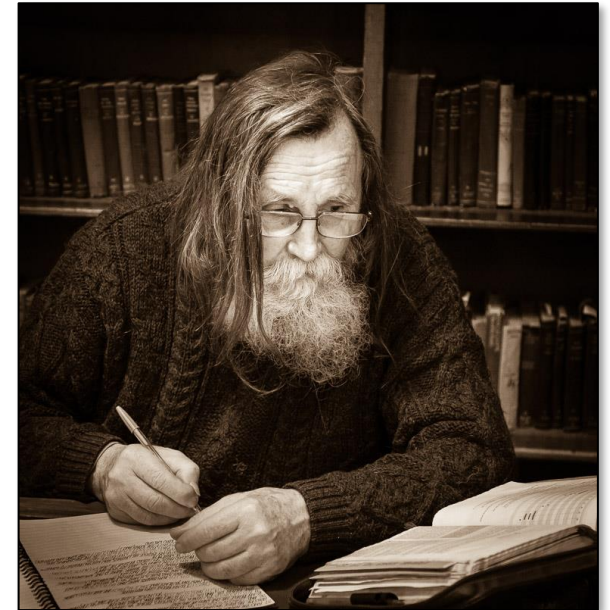
Consider this image from New Scientist magazine, illustrating an article on Covid vaccination.

What has the photographer done with lighting to fit this image to its purpose?

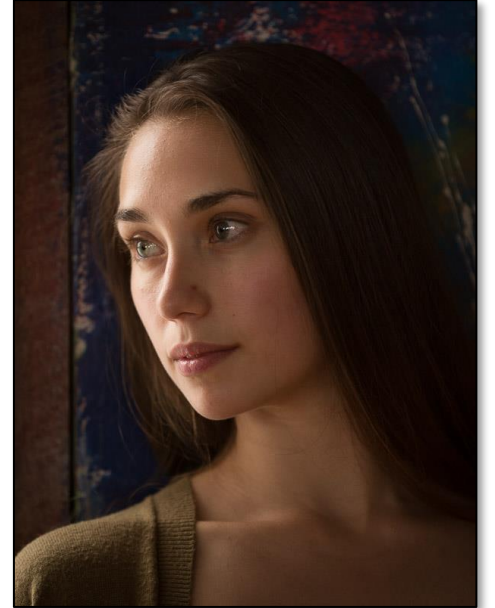
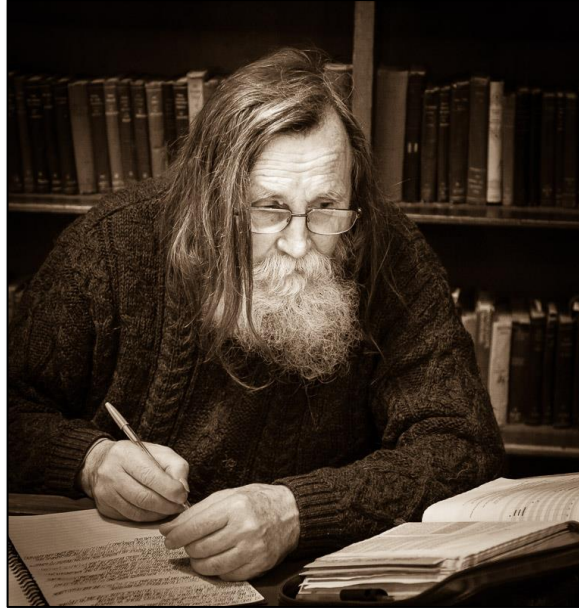
New Scientist 2 Jan 2021 p7

Purpose of lighting

- 3-D Modelling
- Highlight the subject
- Emphasise / hide features
- Drama / mood



Light source: Ambient vs Artificial



Some Common Portrait Lighting patterns

Chiaroscuro – origins in Renaissance;
use of strong contrasts between light and dark

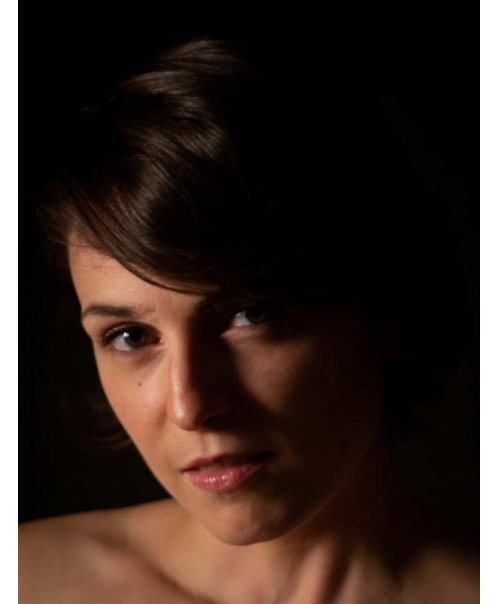


<https://en.wikipedia.org/wiki/Chiaroscuro>



Compare with this image
... not chiaroscuro (nor
Rembrandt Lighting)

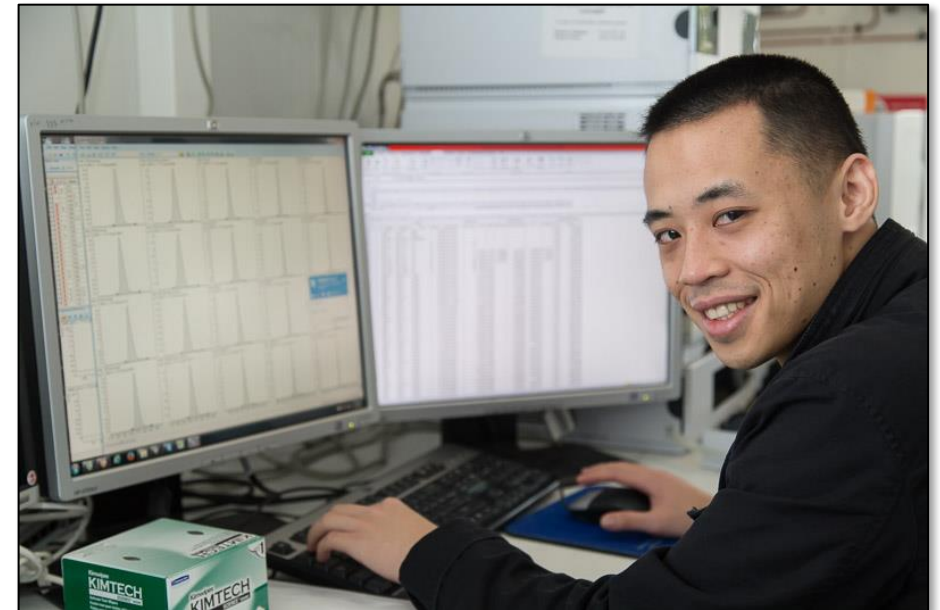
Rembrandt Lighting – illuminated triangle
under the eye on the darker side of the face



https://en.wikipedia.org/wiki/Rembrandt_lighting

Note: these portraits also display chiaroscuro lighting.

Softer Portrait Lighting patterns



Broad and Short Portrait Lighting patterns



Portrait lighting – some experiments.

Accomplice and model: Steven Shaw



Ambient light from window behind camera.

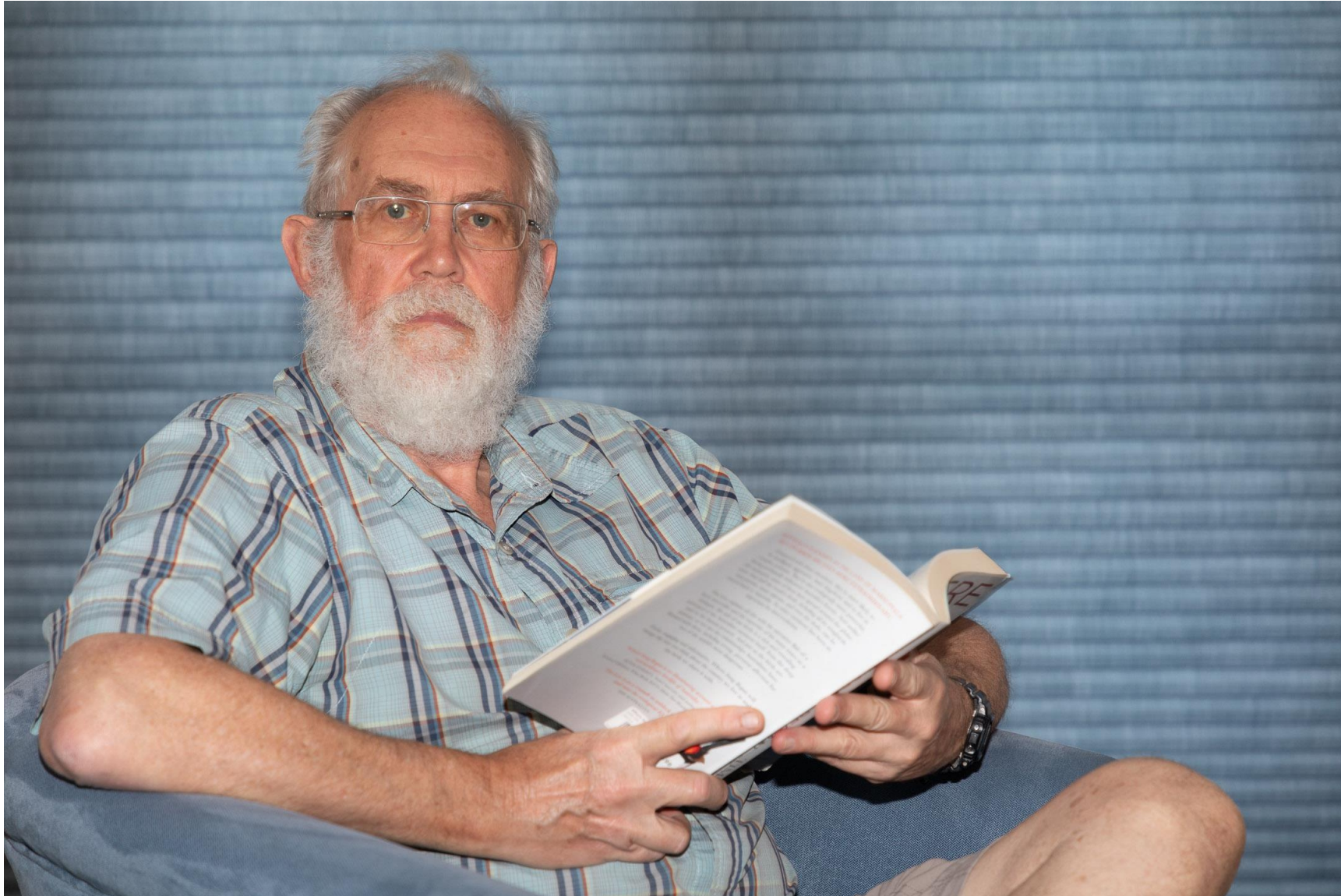
Canon 5D + 24-105 F4 zoom, on tripod.

Portrait lighting – some experiments.



Ambient light from window behind camera + E TTL fill flash on camera, $-1 \frac{2}{3}$ stops adjustment.

Portrait lighting – some experiments.



Ambient light from window behind camera + E TTL fill flash on camera – 0 stops adjustment.

Portrait lighting – some experiments.



Setup: Off camera flash from side. From here on, all flash is manual power setting.

Portrait lighting – some experiments.



Flash at 1/8th power at manual zoom 105 mm.

Portrait lighting – some experiments.



Flash at 1/128th power at manual zoom 105 mm.

Portrait lighting – some experiments.



Portrait lighting – some experiments.



Using a scrim / flag to shade flash light from the background.

Portrait lighting – some experiments.



And adding a reflector to fill the shaded side of the face

Portrait lighting – some experiments.



Tweaking position/angle of the reflector

Portrait lighting – some experiments.



Tweaking position/angle of the reflector

Portrait lighting – some experiments.



Tweaking position/angle of the reflector to get the best balance

Portrait lighting – some experiments.



Using a white thin cloth to diffuse the flash light (makeshift softbox)

Portrait lighting – some experiments.



Diffused flash + reflector

Portrait lighting – some experiments.



Bounce flash off wall and roof behind camera

Portrait lighting – some experiments.



Ambient light from window behind camera + ETTL fill flash on camera – 1 2/3 stops.

Portrait lighting – some experiments.



2nd flash at full power

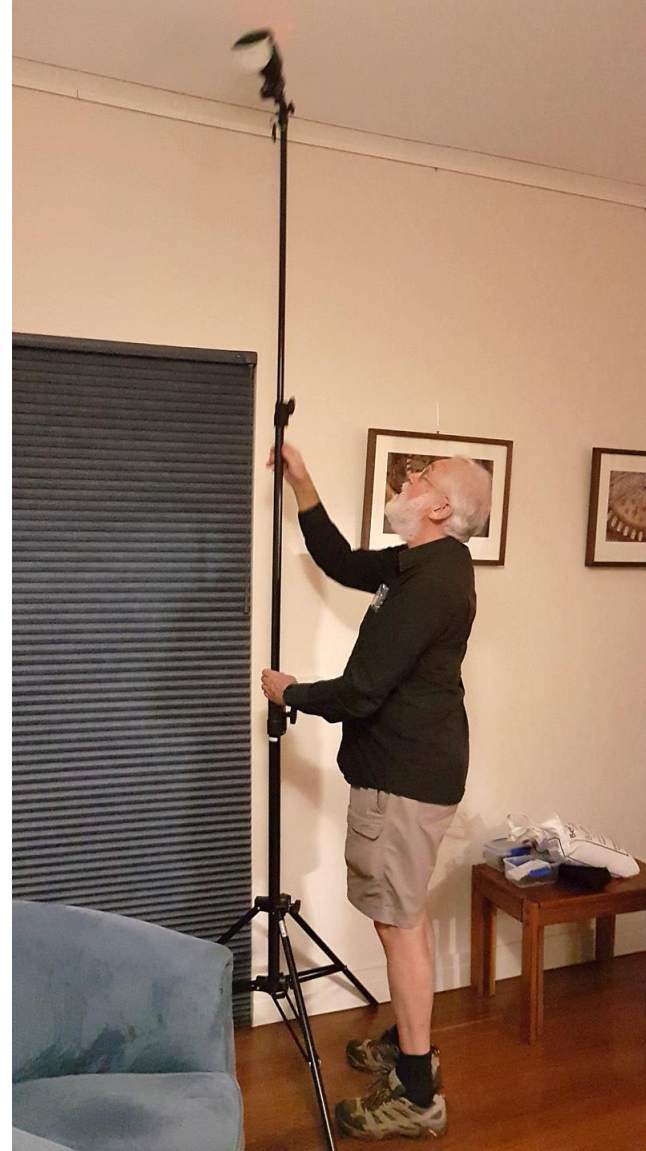
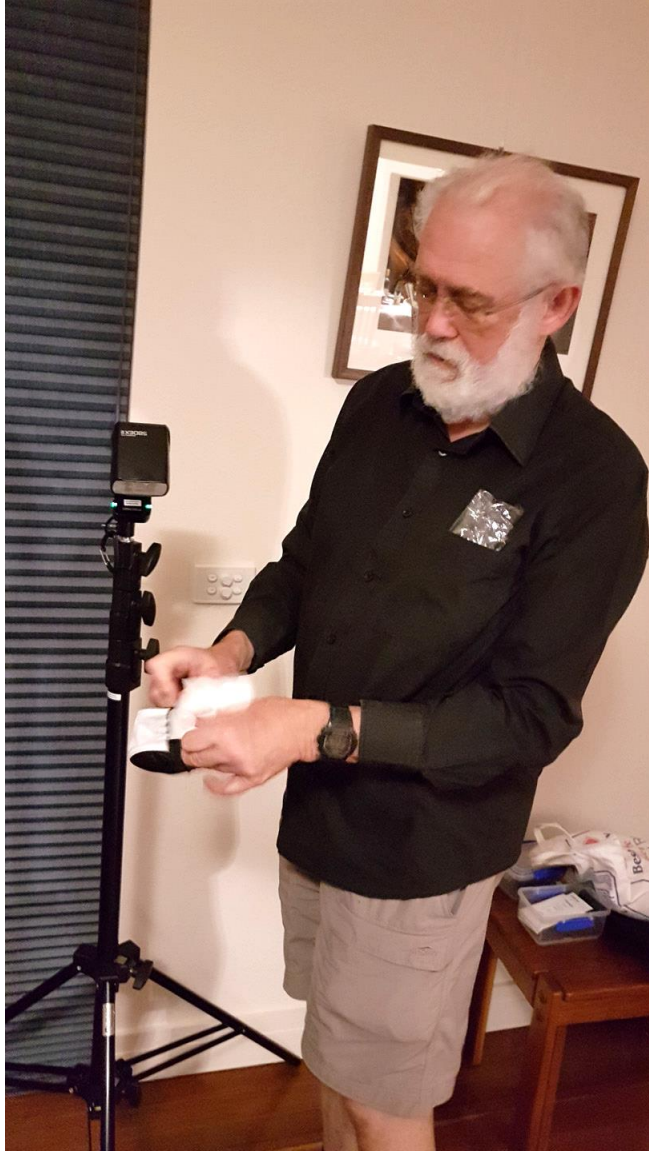
Add a second off-camera flash above the model pointing down, to get highlights in the hair

Portrait lighting – some experiments.



2nd flash at 1/128 power

Portrait lighting – some experiments.



2nd flash at 1/128 power with a few layers of tissue to reduce light

Portrait lighting – some experiments.



2nd flash at 1/128 power with a few layers of tissue to reduce light

Exercise (Voluntary)

Browse a Portrait gallery, eg:

- <https://www.portrait.gov.au/portraits.php?advanced=yes&sort=created&i=both&m=Photography&by=-1>

Reflect on some you like and/or some you dislike (or like less).

- How has the photographer set up the lighting to achieve the end result?
 - is the lighting hard or soft? ambient or artificial? single or multiple light sources?
 - do you recognise a named lighting style from the ones we cover in this brief course?
 - does the lighting highlight the subject or isolate them from the background, or link the subject and background?

Homework

Take a portrait where you have consciously arranged the lighting, be it by placement of your subject using ambient lighting, or by using artificial lights (flash etc) or light modifiers (eg reflectors) to highlight some mood, feature or narrative in the image.

Submit the **image** and your **reflective comments** on the form at <https://resources.waverleycameraclub.org/portraiture-homework-2/>

Next Module:

Working with a model

by Helen Warnod

